

BREKKBRIGHT E TABLETS (BET 311)

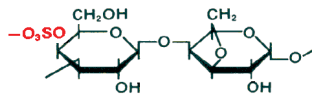
WORT CLARIFICATION

Breakbright E Tablets contain the semi-refined, granulated form of the seaweed species *Eucheuma cottonii*.



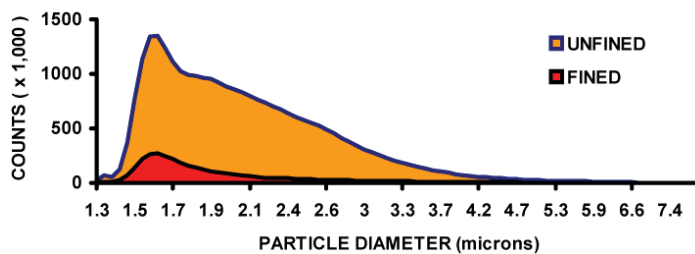
PRINCIPLE

The species *Eucheuma cottonii* is rich in the kappa isomer of carrageenan.



When added to boiling wort, kappa carrageenan reacts strongly with soluble proteins, notably the proline-rich haze precursor fraction. When the wort is cooled the carrageenan-protein complex becomes unstable and precipitates out of solution. The clear wort that results produces a beer with enhanced processing characteristics.

EFFECT OF KETTLE FINING PARTICLE SIZE ANALYSIS



BENEFITS

- Improved hot break compaction in the whirlpool.
- Improved yeast vitality during fermentation.
- Improved filtration – longer filter runs.
- Improved beer haze and colloidal stability.

REGULATORY

Carrageenan is permitted for use as a food additive (and processing aid as defined in certain specific legislation) in the EU, USA, Australia and New Zealand.

DISCLAIMER

The information contained in this leaflet is, to the best of our knowledge, true and accurate but any recommendations made are without any guarantee since the conditions of use are beyond our control. No licence or immunity under any patents is granted is implied.

CONTACT US

For more information, please visit us at www.lallemandbrewing.com

For any questions, you can also reach us at abvickers@lallemand.com